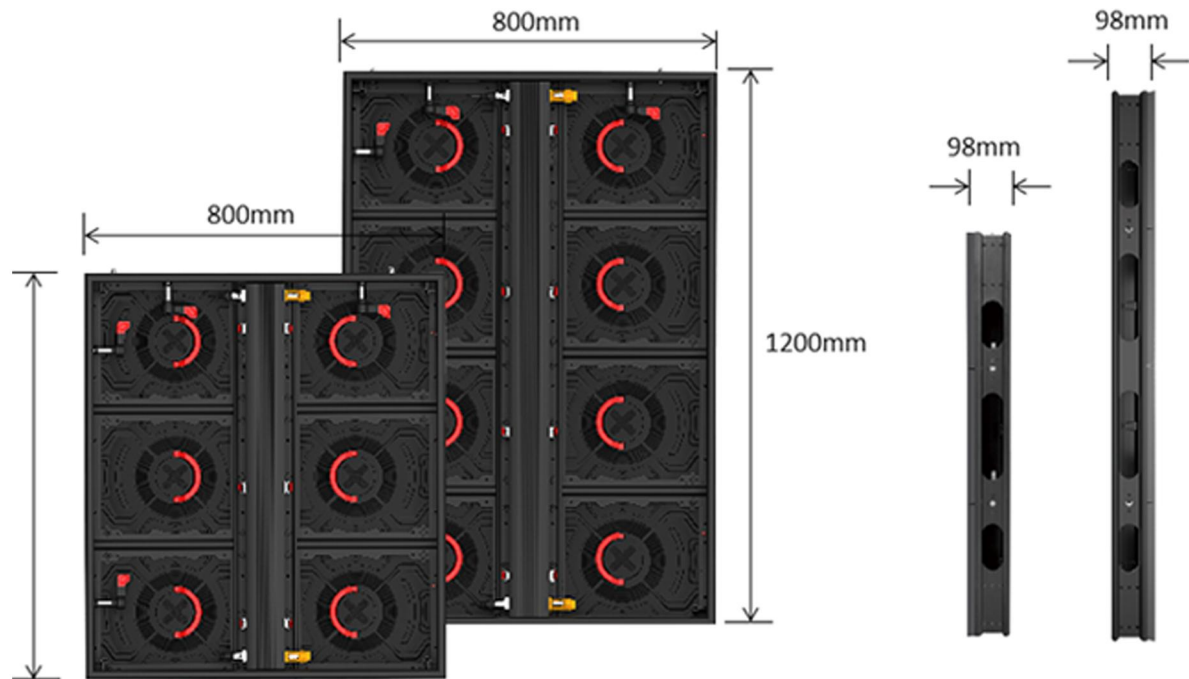


D / series

product overview

The dimensions of the Cabinet comply with the 16:9 standard format, ensuring seamless playback of standard resolution videos.



Product Features:

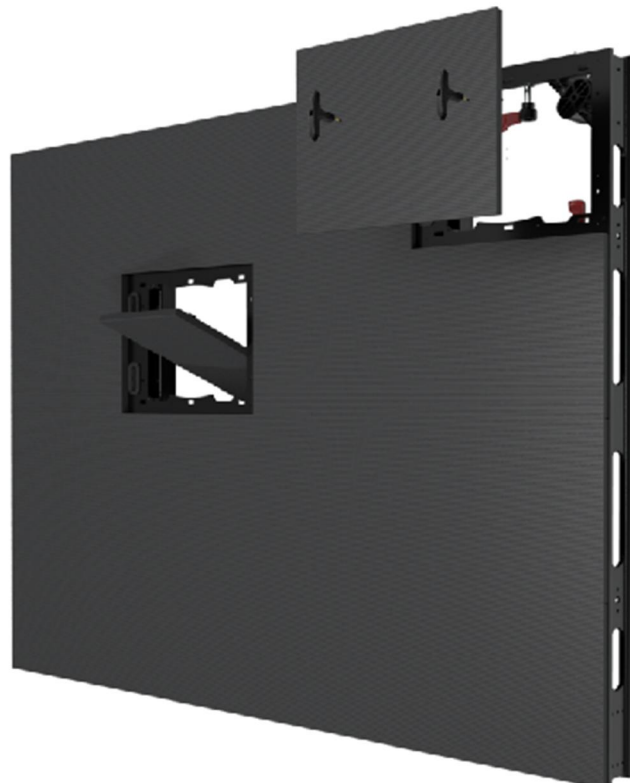
- The dimensions of the cabinet comply with the standard 16:9 aspect ratio
- High quality rubber ring
- The Depth only 98mm
- maintenance and installation both before and after use
- fast lock system
- It is optional for the important part

With a mere thickness of 98mm

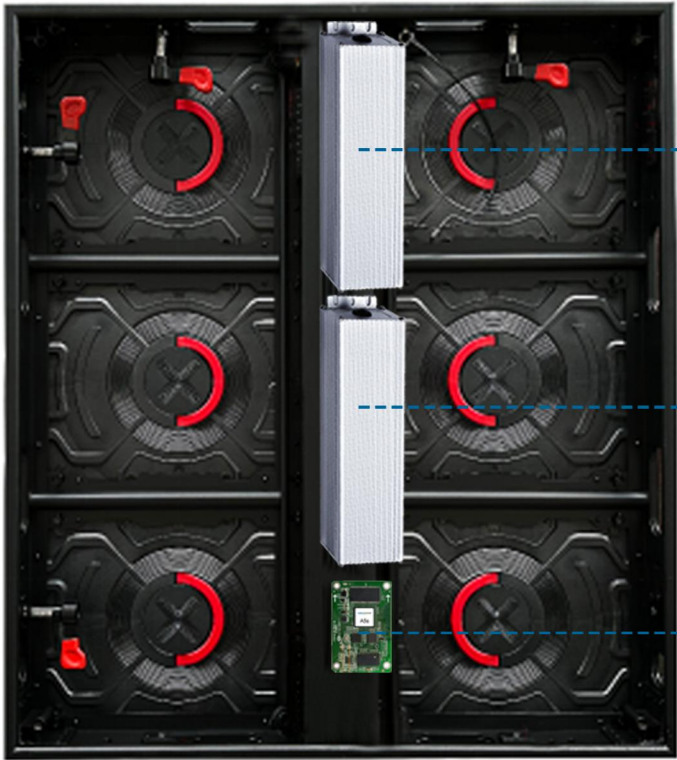
the streamlined design enhances the project's advanced aesthetic



The product features a specialized structural design that facilitates maintenance and installation both before and after use.



It is optional for important part, so the risk could be reduce a lot



Main power supply

Backup power supply

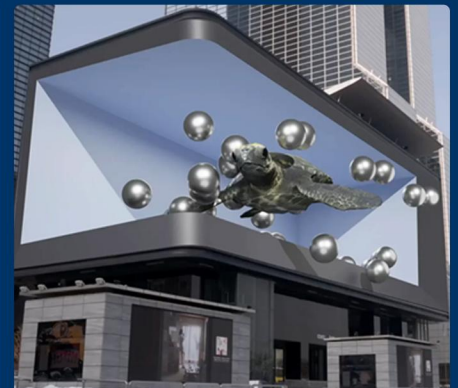
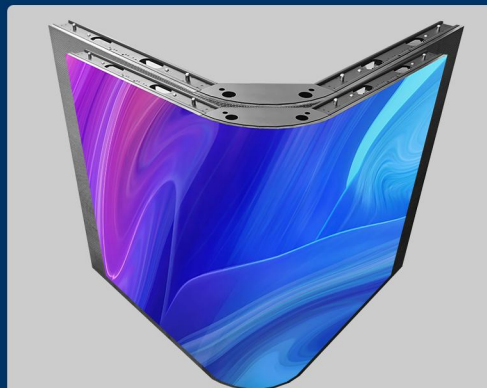
Motherboard



Parameters

Model	D6.6	D8	D10	D10 Pro
Pixel Pitch (mm)	6.6	8	10	10
Pixel Density (dots/m?)	22500	15625	10000	10000
LED Configuration	1R1G1B			
Cabinet Size (WxHxD) mm	960x960x88			
Cabinet Resolution	150x150	125x125	96x96	96x96
Cabinet Weight (kg/pc)	28kg			
Module Size (mm)	320x320			
Module Resolution	72x48	60x40	48x32	48x32
Brightness (cd/m)	>6000			
Viewing Angle (H/V)	140°/120°			
Minimum Viewing Distance (m)	6	8	10	
Gray Scale (bits)	14bit			
Power Consumption (Max./Avg.)(W/m?)	690/230			550/165
Work Voltage (V)	AC 100-240			
Refresh Rate (Hz)	≥3840 (7680Hzis optional)			
Brightness Adjustment	0-100%			
Color Temperature (K)	5,500-9,500 (Adjustable)			
Contrast	6000:1			
Operation System	Windows 7/10			
Control Mode	Synchornous / Asynchronous			
Control Distance (m)	<100(RJ45 Cable);≥100 (Optical fiber transmission)			
Storage Temperature (°C)	-40~+85			
Operating Temperature (°C)	-20~+40			
Operating Humidity	10-90% RH			
Life Span (Hours)	10000			
MTBF (Hours)	5000			
IP Rating (FrontRear)	Front IP67 & Rear IP65			
Curved angel (°)	0-45° (Optional)			
Maintenance	Rear & Front			
Installation	Rear & Front			
Certifications	CE,FCC,ETL			

The right angle could be



D
SERIRS



Cloud Visual Tech Limited

Email: marketing@cloudvisualtech.com
Tel: +86 159 8957 8955
Add: 10 Kaijing North Road, Pingshan
District Shenzhen 518118, China.