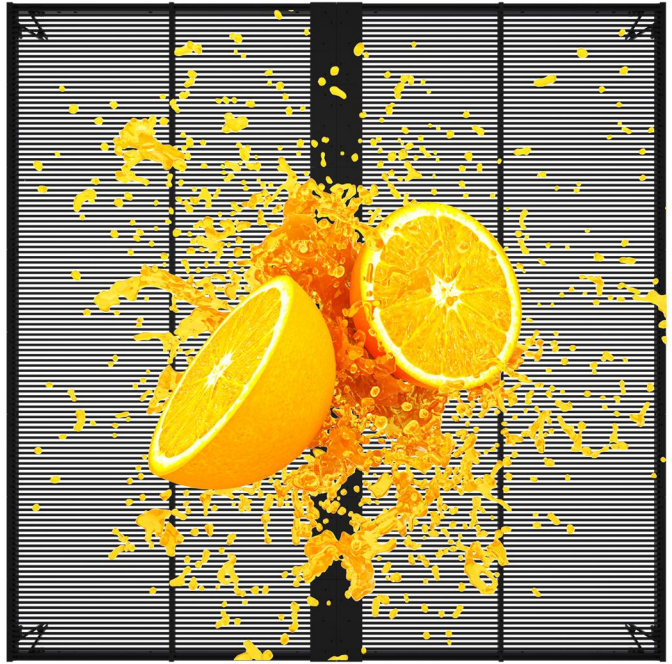


T /series

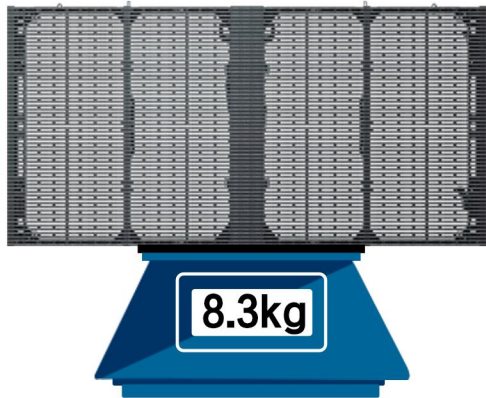
product overview

The permeability can exceed 60%.
Even could up to 80%.

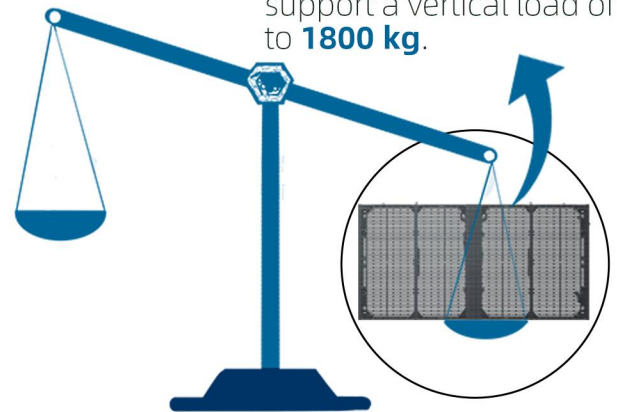


Product Features:

- The permeability can exceed 60%
- light weight
- steel-free installation method
- high brightness
- easy maintenance
- curved is available



Lightweight, with each unit weighing only **10kg**.



Thanks to the superior structural design, it can often support a vertical load of up to **1800 kg**.

Due to the inherent strength of the product, it can be directly lifted from the top in the absence of any additional installation structure at the rear.



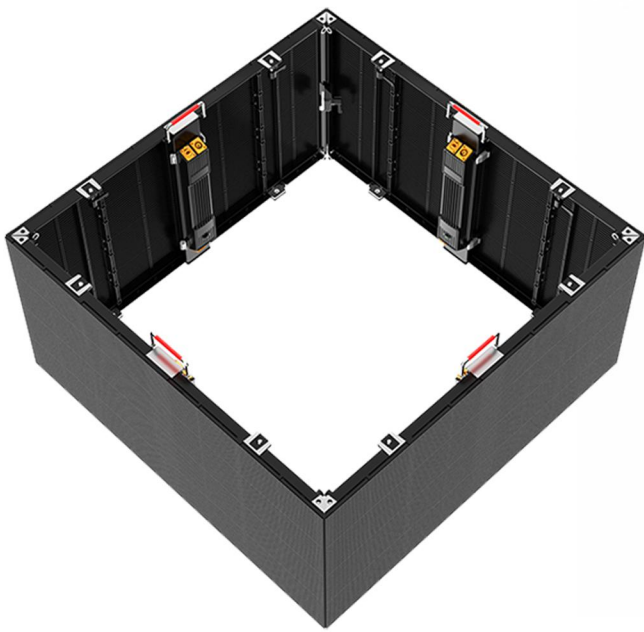
This product is capable of delivering a brightness level of up to 5000 nits.

ensuring that visual content—whether images or videos—remains impeccably clear in any environment.

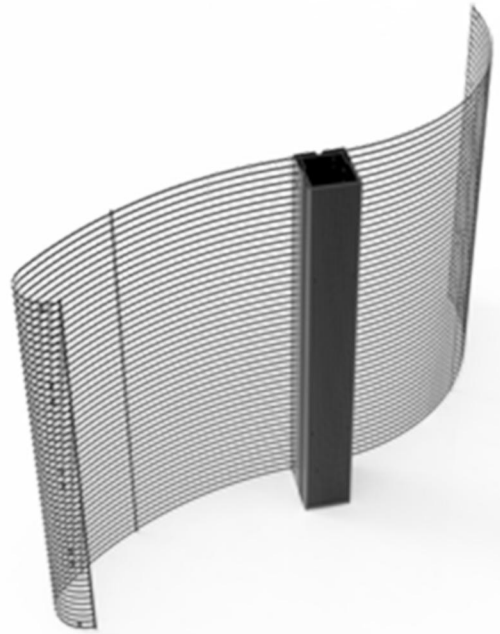


Our products offer the capability for curvature adjustment at any angle ranging from -15° to $+15^{\circ}$. Additionally, right-angle splicing is available.

A diverse array of splicing techniques can enhance creative realization to its fullest potential.



right-angle splicing



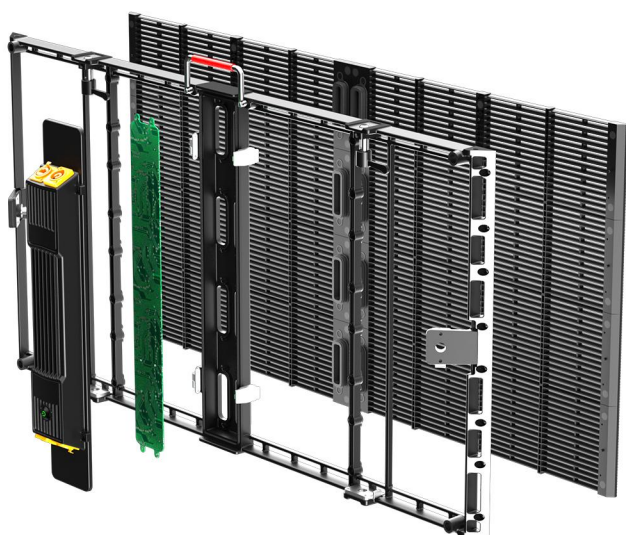
Arc splicing



Parameters



| Model | TN2.6-5.2 | TN2.8-5.6 | TN3.1 | TN3.9-7.8 | TN7.8 | TO3.9-7.8 | TO5.2-10.4 | TO10.4-10.4 | TO15.6-15.6 |
|--------------------------------------|--|-----------|------------|-----------|---------|--|------------|-------------|-------------|
| Pixel Pitch (mm) | 2.6-5.2 | 2.8-5.6 | 3.1-3.1 | 3.9-7.8 | 7.8-7.8 | 3.9-7.8 | 5.2-10.4 | 10.4-10.4 | 15.6-15.6 |
| Pixel Density (dots/m ²) | 73728 | 61952 | 102400 | 32768 | 16384 | 32768 | 18432 | 9216 | 4096 |
| Perceptual Transparency | 65% | 70% | 55% | 75% | 75% | 53% | 58% | 58% | 71% |
| LED Configuration | 1R1G1B | | | | | 1R1G1B | | | |
| Module size WxH | 500x125mm | | 500x62.5mm | 500x125mm | | 500x125mm | | 500x62.5mm | 500x125mm |
| Module resolution | 192x24 | 176x22 | 160x20 | 128x16 | 64x16 | 128x16 | 192x48 | 48x6 | 32x8 |
| Cabinet size WxH | 1000x1000x75mm | | | | | 1000x500x80mm | | | |
| Cabinet resolution | 384x192 | 352x176 | 320x320 | 256x128 | 128x128 | 256x64 | 192x48 | 96x48 | 64x32 |
| Brightness (cd/m) | 5000 | | | | | 4500 | | | 5500 |
| Material | Aluminum Profile | | | | | Aluminum Die-casting | | | |
| Viewing Angle (H/V) | 140/140 | | | | | 140/140 | | | |
| Minimum Viewing Distance (m) | 2.5 | | 3 | 4 | 8 | 4 | 5 | 10 | 16 |
| Gray Scale (bits) | 14bit | | | | | 14bit | | | |
| Power Consumption (Max./Avg.)(W/m) | 800/200 | | | | | 800/200 | | | |
| Work Voltage (V) | AC100-240 | | | | | AC100-240 | | | |
| Refresh Rate (Hz) | ≥3840 | | | | | ≥3840 | | | |
| Brightness Adjustment | 0-100% | | | | | 0-100% | | | |
| Color Temperature (K) | 5,500-9,500(Adjustable) | | | | | 5,500-9,500(Adjustable) | | | |
| Operation System | Windows7/10 | | | | | Windows7/10 | | | |
| Control Mode | Synchronous/Asynchronous | | | | | Synchronous/Asynchronous | | | |
| Control Distance (m) | <100 (Cable); ≥100(Optical fiber transmission) | | | | | <100 (Cable); ≥100(Optical fiber transmission) | | | |
| Storage Temperature (°C) | -40~+85 | | | | | -40~+85 | | | |
| Operating Temperature (°C) | 0~+50 | | | | | -20~+50 | | | |
| Operating Humidity | 10-90% RH | | | | | 10-90% RH | | | |
| Life Span (Hours) | 10000 | | | | | 10000 | | | |
| MTBF (Hours) | 5000 | | | | | 5000 | | | |
| IP Rating (FrontRear) | IP30/IP30 | | | | | IP65 | | | |
| Maintenance | Front & Rear | | | | | Front & Rear | | | |
| Installation | Front & Rear | | | | | Front & Rear | | | |
| Certifications | CE,FCC,ETL | | | | | CE,FCC,ETL | | | |



The innovative design of the product's structure facilitates the straightforward removal of components requiring maintenance from the front of the unit.

T
SERIRS



Cloud Visual Tech Limited

Email: marketing@cloudvisualtech.com
Tel: +86 159 8957 8955
Add: 10 Kaijing North Road, Pingshan
District Shenzhen 518118, China.