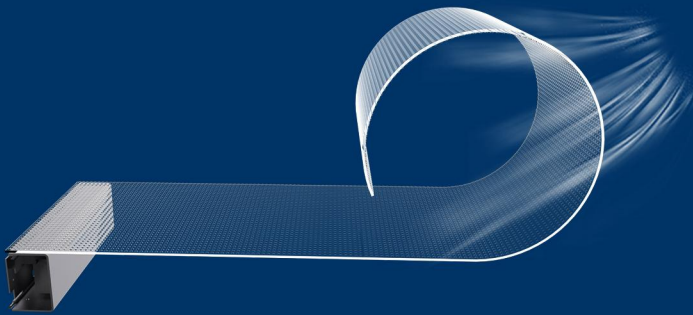


# TP /series

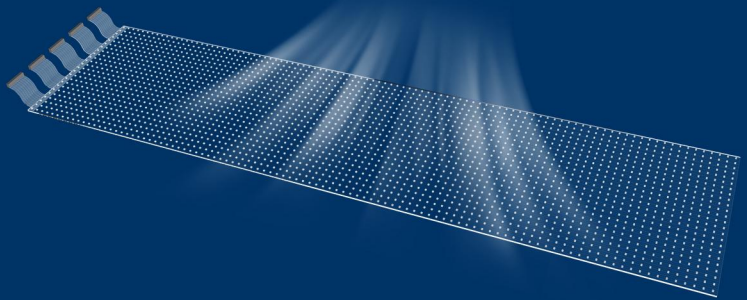
product overview



### Transparent and imperceptible design

With a unique production process and materials, the product achieves close to 100% transparency.

When installed on glass, people will focus on their attention to the video content, almost rendering the product imperceptible.



### Product Features:

- light transmittance of nearly 100%
- naked-eye AR commercial display experience
- Flexible size could fit all different windows
- Depth less then 2mm
- brightness is 3000nits could always catching up the attention

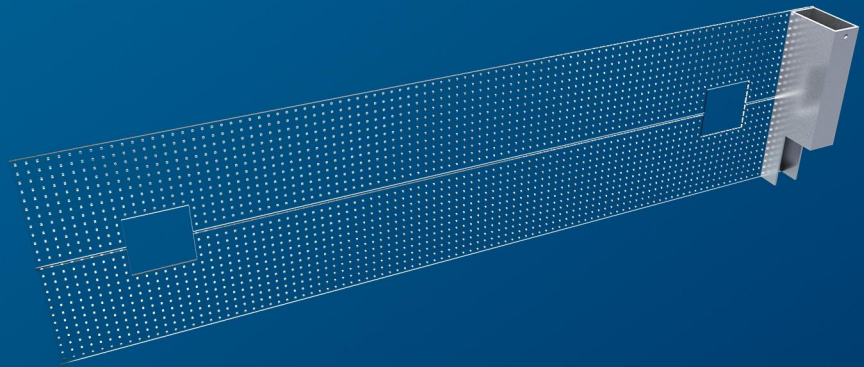


## naked-eye AR commercial display experience



### Flexible size could fit all different windows

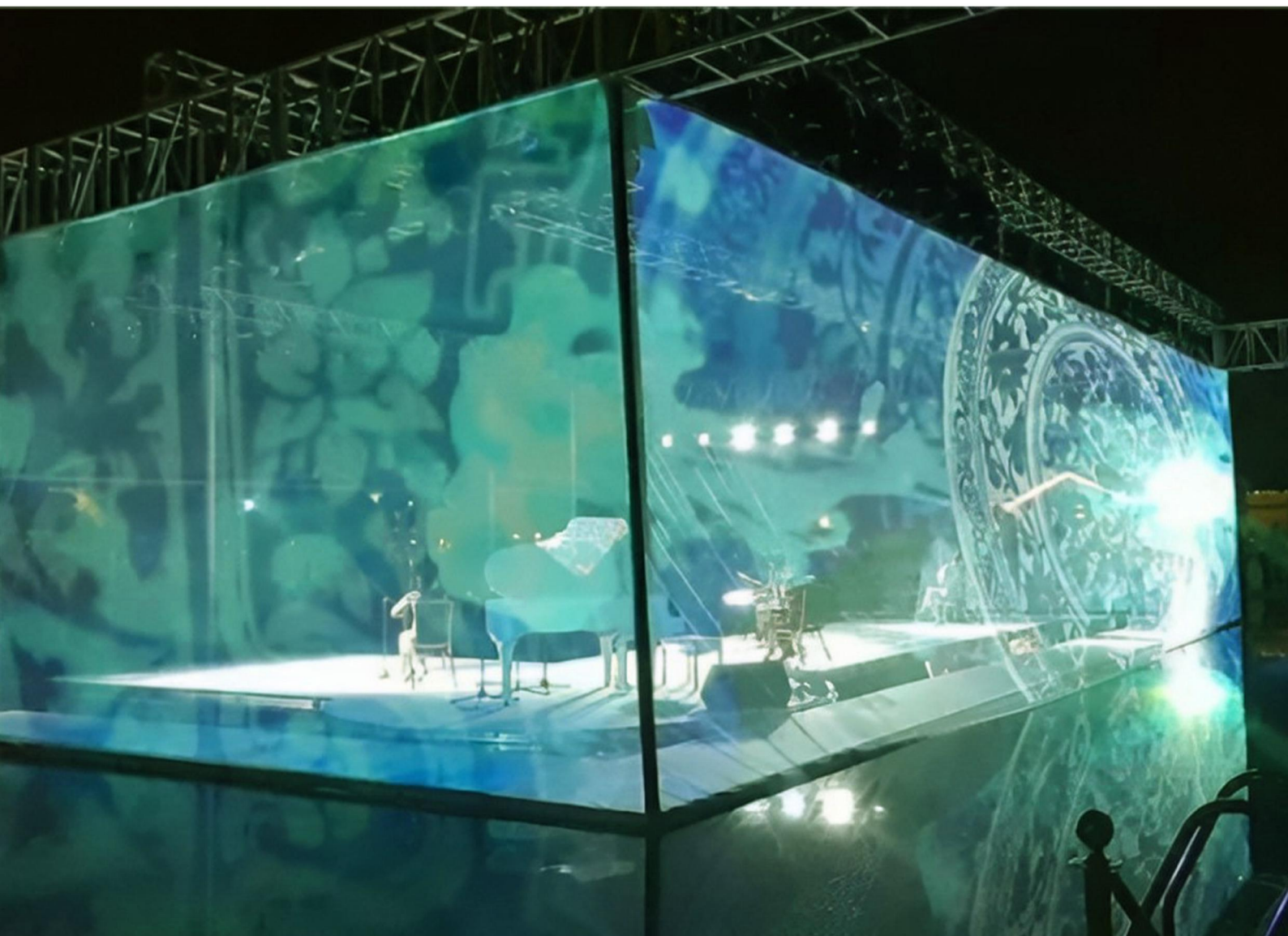
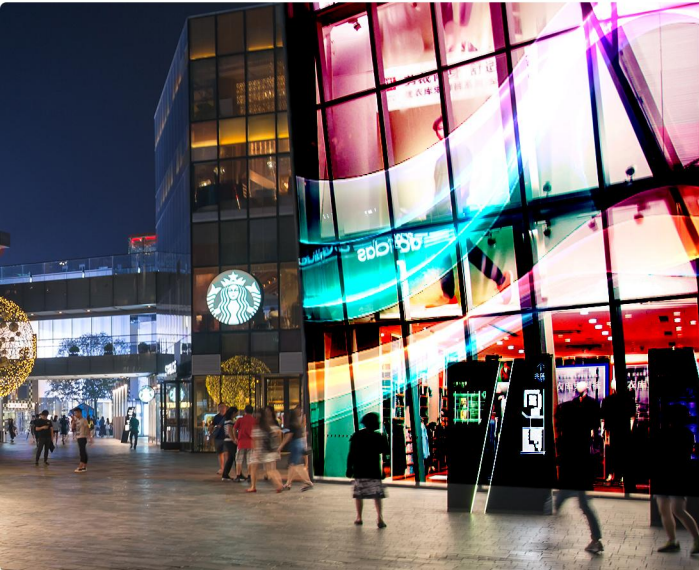
As the actual window size varies. Through a special PCB design, both the width and height can be customized, even need to leave some space in middle.





The luminance of the C series can soar as high as 3,000 Nits, This guarantees that the video content will shine conspicuously and turn into the most captivating presence in any extraordinary environment.

**brightness is 3000nits could always catching up the attention.**





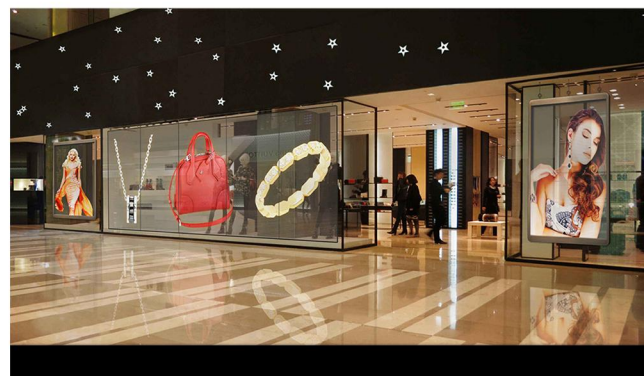
## Parameters

Model	TP4	TP4-8	TP6	TP8	TP10	TP16	TP16-32	TP32	TP20-60
Pixel Pitch (mm)	4	4*8	6	8	10	16	16*32	32	20*60
Pixel Density (dots/m?)	62500	31250	27556	15625	10000	3844	1922	961	800
Prerceptual Transparency	95%				99%				
LED Configuration	1R1G1B								
Brightness (cd/m?)	3000			3500			2500	1500	800
Viewing Angle (H/V)	160/160								
Minimum Viewing Distance (m)	4	6	8	10	16		32	20	
Gray Scale (bits)	14bit								
Power Consumption (Max./Avg.)(W/m?)	600/200								
Work Voltage (V)	AC100-240								
Refresh Rate (Hz)	≥3840(7680Hzis optional)								
Brightness Adjustment	0-100%								
Color Temperature (K)	5,500-9,500(Adjustable)								
Operation System	Windows7/10								
Control Mode	Synchornous/Asynchronous								
Control Distance (m)	<100( Cable );≥100(Optical fiber transmission)								
Storage Temperature (°C)	-40~+85								
Operating Temperature (°C)	-20~+50								
Operating Humidity	10-90% RH								
Life Span (Hours)	10000								
MTBF (Hours)	5000								
IP Rating (FrontRear)	IP30/IP30								
Maintenance	Rear								
Installation	Rear								
Certifications	CE,FCC,ETL								

## Depth less than 3mm

It resembles a polycarbonate film less than 3mm thick adhered to the window. The design is so slender that the product and the glass seem to be integrated. In this manner, people will be more engrossed and appreciate the marvellous content.

3mm



**TP**  
SERIRS



## **Cloud Visual Tech Limited**

Email: [marketing@cloudvisualtech.com](mailto:marketing@cloudvisualtech.com)  
Tel: +86 159 8957 8955  
Add: 10 Kaijing North Road, Pingshan  
District Shenzhen 518118, China.